



BRANZ Appraised

Appraisal No. 767 [2023]

PINK® BATTS® SKILLION ROOF INSULATION

Appraisal No. 767 [2023]

This Appraisal replaces BRANZ
Appraisal No. 767 [2018]

Amended 04 November 2024

Amended 21 January 2026



BRANZ Appraisals

Technical Assessments of
products for building and
construction.



Tasman Insulation NZ Ltd [t/a Comfortech Building Performance Solutions]

PO Box 12 069

Penrose

Auckland

Tel: 09 579 2139

Freephone: 0800 746 522

Web: www.pinkbatts.co.nz



BRANZ

BRANZ

1222 Moonshine Rd,

RD1, Porirua 5381

Private Bag 50 908

Porirua 5240,

New Zealand

Tel: 04 237 1170

branz.co.nz



Product

- 1.1 Pink® Batts® Skillion Roof Insulation is a range of resin-bonded, fibrous glasswool thermal insulating material, with a controlled thickness for use in skillion roof applications.

Scope

- 2.1 Pink® Batts® Skillion Roof Insulation has been appraised for use as a thermal insulation material for timber-framed skillion roofs of domestic and commercial buildings.

Building Regulations

New Zealand Building Code (NZBC)

- 3.1 In the opinion of BRANZ, Pink® Batts® Skillion Roof Insulation, if designed, used, installed and maintained in accordance with the statements and conditions of this Appraisal, will meet or contribute to meeting the following provisions of the NZBC:

Clause B2 DURABILITY: Performance B2.3.1 [a] not less than 50 years. Pink® Batts® Skillion Roof Insulation meets this requirement. See Paragraph 9.1.

Clause E3 INTERNAL MOISTURE: Performance E3.3.1. Pink® Batts® Skillion Roof Insulation contributes to meeting this requirement. See Paragraphs 14.1 and 14.2.

Clause F2 HAZARDOUS BUILDING MATERIALS: Performance F2.3.1. Pink® Batts® Skillion Roof Insulation meets this requirement.

Clause H1 ENERGY EFFICIENCY: Performance H1.3.1 [a] and H1.3.2 E. Pink® Batts® Skillion Roof Insulation contributes to meeting these requirements. See Paragraphs 15.1 and 15.2.

Technical Specification

- 4.1 Pink® Batts® Skillion Roof Insulation is a resin-bonded, fibrous glasswool insulation, manufactured from recycled and/or virgin glass and cured urea extended phenolic resin. Pink® Batts® Skillion Roof Insulation is available as set out in Table 1.

Table 1: Pink® Batts® Skillion Roof Insulation Product Range

R-value	Length [mm]	Width [mm]	Nominal Thickness [mm]	Density [kg/m³]
1.0	1,220	580	40	19.1
3.2	1,220	432	115	22.6
3.6	1,220	432	165	9.5
4.5	1,220	432	165	19.5
5.0	1,220	432 or 560	180	16.8
6.0	1,220	432 or 560	230	13.8
7.4	1,220	432 or 560	275	14.7

All Pink® Batts® Insulation products covered by this Appraisal have the Eco Choice Aotearoa Licence.

- 4.2 Pink® Batts® Skillion Roof Insulation is pink in colour and baled in pink/silver polythene bags with labelling in compliance with AS/NZS 4859.1.

Handling and Storage

- 5.1 Pink® Batts® Skillion Roof Insulation must be stored under cover and in dry conditions. Heavy objects must not be stacked on the bales. The bales must be stored in an orientation that avoids excessive compression of the product.
- 5.2 In general, insulation products are sensitive to the length of time they are stored under compression packaging. Product that does not recover to its nominal thickness may not achieve the stated R-value.

Technical Literature

- 6.1 This Appraisal must be read in conjunction with:
- Pink® Batts® Thermal Solutions: Product Guide, May 2025;
 - Pink® Batts® Skillion Roof Insulation Product Guide and Installation Guide, January 2025.
- 6.2 All aspects of design, use, installation and maintenance contained in the Technical Literature and within the scope of this Appraisal must be followed.

Design Information

General

- 7.1 Pink® Batts® Skillion Roof Insulation is intended for use as thermal insulation to meet the requirements of the NZBC. Pink® Batts® Skillion Roof Insulation can be used to meet the requirements of the NZBC Verification Methods H1/VM1, H1/VM2, NZBC Acceptable Solutions H1/AS1 or H1/AS2. Greater construction R-values can be achieved where specific design is used. For construction R-values, refer to the BRANZ House Insulation Guide. Product R-values and dimensions are given in Table 1.
- 7.2 The thermal resistance [R-value] of Pink® Batts® Skillion Roof Insulation has been determined by testing to AS/NZS 4859.1.
- 7.3 Pink® Batts® Skillion Roof Insulation is designed to be friction-fitted between timber roof framing [rafters] in skillion roofs.
- 7.4 Pink® Batts® Skillion Roof Insulation is designed to maintain its labelled nominal thickness and to maintain ventilation in a skillion roof application.

- 7.5 The building envelope must be constructed to ensure the insulation remains dry during installation and throughout the life of the building.
- 7.6 The clearance requirements for downlights must be met and reference made to the manufacturers instructions and NZS 4246. Refer to Paragraphs 11.1-11.3.

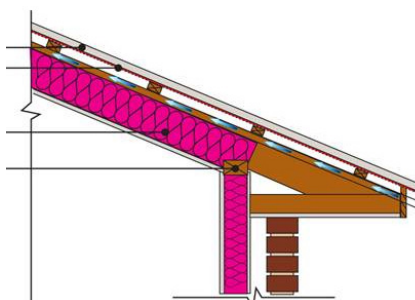
Roof Ventilation

- 8.1 To prevent moisture transfer and to provide roof ventilation in skillion roof applications, separation of 25 mm minimum is required between the insulation and any rigid substrate or flexible roof underlay. Pink® Batts® Skillion Roof Insulation is designed to maintain its nominal thickness in order to achieve the 25 mm clearance in normal applications. Table 2 lists the products available and suitable rafter depth.

Table 2: Suitable rafter depth for different Pink® Batts® Skillion Roof Insulation products when installed with longrun roofing as shown in Figure 1

R-value	Nominal Thickness [mm]	Rafter Depth [mm]
3.2	115	140
3.6	165	190
4.5	165	190
5.0	180	190
6.0	230	240
7.4	275	290

Figure 1: Design requirements for Pink® Batts® Skillion Roof Insulation



- 8.2 When Pink® Batts® Skillion Roof Insulation is installed into skillion roofs where the underlay rigid substrate or flexible roof underlay is installed directly against the rafter, a Pink® Batts® Skillion Roof Insulation product of a thickness less than 25 mm compared to the rafter depth must be chosen.

Durability

Serviceable Life

- 9.1 Where the building is maintained so that the provisions of NZBC Clauses E2 and E3 are met, and where the insulation is not crushed or exposed to conditions that will diminish its thermal performance [e.g. moisture], Pink® Batts® Skillion Roof Insulation can expect to have a serviceable life of at least 50 years.

Maintenance

- 10.1 Insulation that has become damp must be removed and the cause of dampness repaired. Cavities must be clean and dry before fitting new insulation of an equivalent thermal rating. NZS 4246 gives guidance on thermal insulation maintenance due to water damage.

Prevention of Fire Occurring

- 11.1 Pink® Batts® Skillion Roof Insulation is classified a non-combustible material and need not be separated from heat sources such as fireplaces, heating appliances and chimneys. NZBC Acceptable Solutions C/AS1 and C/AS2 provide methods for separation and protection of combustible materials from heat sources.

Downlights

- 11.2 Insulation should maintain 100 mm clearance from all undefined recessed luminaires, treating them as a heat source. For insulation to abut or cover recessed luminaires these must be clearly marked as being suitable for having insulation abutting or covering them and have been installed in accordance with NZBC Acceptable Solution G9/AS1.

Fire Affecting Areas Beyond the Fire Source

Control of Internal Fire and Smoke Spread

- 12.1 Pink® Batts® Skillion Roof Insulation products have been tested to AS 1530.1 and are classified as non-combustible. Pink® Batts® Skillion Roof Insulation can be assigned a Group Number of 1-S. Refer to NZBC Acceptable Solutions C/AS1 and C/AS2 to determine where Pink® Batts® Insulation may be used according to its Group Number.
- 12.2 Pink® Batts® Insulation may or may not need to be enclosed by an internal lining depending on the Risk Group. The NZBC Building Product Specifications provides specified performances [Group Number] for some generic substrate and coating combinations, including concrete, sheet metal, fibre cement, gypsum plasterboard and wood substrates.

External Moisture

- 13.1 The total building envelope must be weathertight and comply with the requirements of NZBC Clause E2 to ensure that the insulation remains dry in use.
- 13.2 The moisture content of the construction materials at the time of installing and enclosing the insulation must meet the requirements of NZBC Acceptable Solution E2/AS1, or a lower moisture content if required by the lining manufacturer.

Internal Moisture

- 14.1 Buildings must provide an adequate combination of thermal resistance, ventilation and space temperature to all habitable spaces, bathrooms, laundries and other spaces where moisture may be generated or may accumulate. This does not apply to Communal Non-residential, Commercial, Industrial, Outbuildings or Ancillary buildings.
- 14.2 Roofs of housing complying with the Schedule Method for Compliance with NZBC Clause H1.3.2 E will have adequate thermal resistance. Other buildings may require more thermal insulation to satisfy the requirements of NZBC Acceptable Solution E3/AS1 than that to satisfy the energy efficiency provisions alone.

Energy Efficiency

- 15.1 Pink® Batts® Skillion Roof Insulation will contribute to meeting the requirements of NZBC Clause H1, Performance H1.3.1 [a] and H1.3.2 E by compliance with NZBC Verification Methods H1/VM1, H1/VM2, NZBC Acceptable Solutions H1/AS1 or H1/AS2. Refer to Paragraphs 7.1-7.5.
- 15.2 Pink® Batts® Skillion Roof Insulation R-values have been determined by testing to AS/NZS 4859.1 and are given in Table 1.

Installation Information

Installation Skill Level Requirement

- 16.1 All design and building work must be carried out in accordance with the Pink® Batts® Skillion Roof Insulation Technical Literature and this Appraisal. All building work must be undertaken by competent and experienced tradespeople conversant with Pink® Batts® Skillion Roof Insulation.

General

- 17.1 Installation of Pink® Batts® Skillion Roof Insulation must be in accordance with the Technical Literature and this Appraisal. NZS 4246 should be used as a guide for installing insulation in residential buildings.
- 17.2 Pink® Batts® Skillion Roof Insulation must be installed only when the building is enclosed and when the construction materials have achieved the required maximum moisture content or less.
- 17.3 Pink® Batts® Skillion Roof Insulation must be released from the packaging and allowed to re-loft prior to installation. The time to loft will depend upon the length of time the product has been packaged and stored.
- 17.4 In situations where the material is installed from above [pre-roofing], planning and preparation must be undertaken to ensure the product does not get wet.
- 17.5 Where a controlled thickness is required, the installer must ensure the specified maximum thickness is not exceeded.
- 17.6 Pink® Batts® Skillion Roof Insulation is installed by friction-fitting the insulation between framing members. The insulation must not be folded, tucked or compressed. A close, even fit provides the most efficient thermal performance.
- 17.7 Pink® Batts® Skillion Roof Insulation is manufactured to suit roof rafter framing centres of 450 mm. Where the insulation is required to be cut to fit, the cut should be 10 mm wider than the space to ensure a friction fit.
- 17.8 The clearance requirements for heating appliances and downlights must be followed. Refer also to NZS 4246.

Inspections

- 17.9 The Technical Literature, this Appraisal and NZS 4246 must be referred to during the inspection of Pink® Batts® Skillion Roof Insulation installations.

Health and Safety

- 18.1 Refer to the Technical Literature and NZS 4246 for guidance on health and safety requirements such as personal protective clothing and installation hazard assessment.

Basis of Appraisal

The following is a summary of the technical investigations carried out:

Tests

- 19.1 Thermal resistance testing of Pink® Batts® Skillion Roof Insulation in accordance with AS/NZS 4859.1 has been completed. The results have been reviewed by BRANZ technical experts.
- 19.2 Tests have been carried out in accordance with AS 1530.1. Pink® Batts® Skillion Roof Insulation is not deemed combustible according to the test criteria. The results have been reviewed by BRANZ technical experts.

Other Investigations

- 20.1 An assessment of the durability of Pink® Batts® Skillion Roof Insulation has been made by BRANZ technical experts.
- 20.2 The manufacturer's Technical Literature has been reviewed by BRANZ and found to be satisfactory.

Quality

- 21.1 The manufacture of Pink® Batts® Skillion Roof Insulation has been examined by BRANZ, including methods adopted for quality control. Details of the manufacturing processes, and quality and composition of the raw materials used were obtained and found to be satisfactory.
- 21.2 The range of Pink® Batts Skillion Roof Insulation products have been assessed for their environmental impact by The New Zealand Ecolabelling Trust and comply with the requirements of the Eco Choice Aotearoa Specification, Licence No. 2504017 - Building Insulants. The products that have the Eco Choice Aotearoa Licence are noted in Table 1.
- 21.3 Comfortech Building Solutions is responsible for the quality of the product supplied.
- 21.4 Quality of installation of the product on-site is the responsibility of the installer.
- 21.5 Quality of maintenance of the building to ensure the insulation material remains dry is the responsibility of the building owner.

Sources of Information

- AS 1530.1:1994 Combustibility test for materials.
- AS/NZS 4859.1:2018 Thermal insulation materials for buildings.
- BRANZ House Insulation Guide [[Sixth Edition](#)].
- [BRANZ Bulletin Issue 610](#) Preventing moisture problems in timber-framed skillion roofs, dated June 2017.
- NZS 4246:2016 Energy efficiency - Installing bulk thermal insulation in residential buildings.
- Ministry of Business, Innovation and Employment Record of Amendments - Acceptable Solutions, Verification Methods and Handbooks.
- The Building Regulations 1992.

Amendments

Amendment No. 1, dated 04 November 2024

This Appraisal has been amended to update product specifications in Table 1 for the R3.6 product.

Amendment No.2, dated 21 January 2026

This Appraisal has been amended to reflect the changes made to the NZBC compliance documentation.



In the opinion of BRANZ, **Pink® Batts® Skillion Roof Insulation** is fit for purpose and will comply with the Building Code to the extent specified in this Appraisal provided it is used, designed, installed and maintained as set out in this Appraisal.

The Appraisal is issued only to **Tasman Insulation New Zealand Ltd [t/a Comfortech Building Solutions]**, and is valid until further notice, subject to the Conditions of Appraisal.

Conditions of Appraisal

1. This Appraisal:
 - a) relates only to the product as described herein;
 - b) must be read, considered and used in full together with the Technical Literature;
 - c) does not address any Legislation, Regulations, Codes or Standards, not specifically named herein;
 - d) is copyright of BRANZ.
2. **Tasman Insulation New Zealand Ltd [t/a Comfortech Building Solutions]**:
 - a) continues to have the product reviewed by BRANZ;
 - b) shall notify BRANZ of any changes in product specification or quality assurance measures prior to the product being marketed;
 - c) abides by the BRANZ Appraisals Services Terms and Conditions;
 - d) warrants that the product and the manufacturing process for the product are maintained at or above the standards, levels and quality assessed and found satisfactory by BRANZ pursuant to BRANZ's Appraisal of the product.
3. BRANZ makes no representation or warranty as to:
 - a) the nature of individual examples of, batches of, or individual installations of the product, including methods and workmanship;
 - b) the presence or absence of any patent or similar rights subsisting in the product or any other product;
 - c) any guarantee or warranty offered by **Tasman Insulation New Zealand Ltd [t/a Comfortech Building Solutions]**.
4. Any reference in this Appraisal to any other publication shall be read as a reference to the version of the publication specified in this Appraisal.
5. BRANZ provides no certification, guarantee, indemnity or warranty, to **Tasman Insulation New Zealand Ltd [t/a Comfortech Building Solutions]** or any third party.

For BRANZ



Claire Falck

Chief Executive

Date of Issue:

30 October 2023